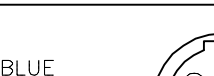


WIRING DIAGRAM



BLUE

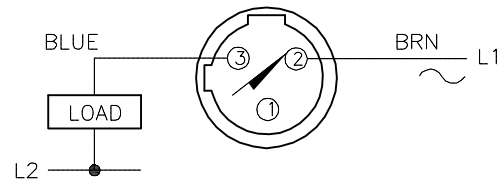
BRN L1

LOAD

L2

OUTPUT: AZ3X

WARNING: NO SHORT-CIRCUIT PROTECTION
ALWAYS WIRE A LOAD IN SERIES WITH THE SENSOR.

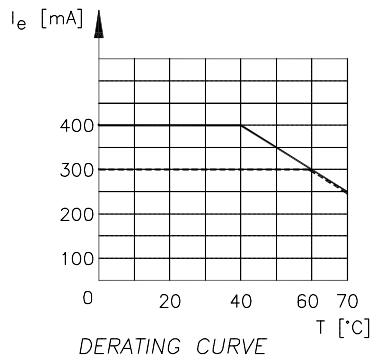
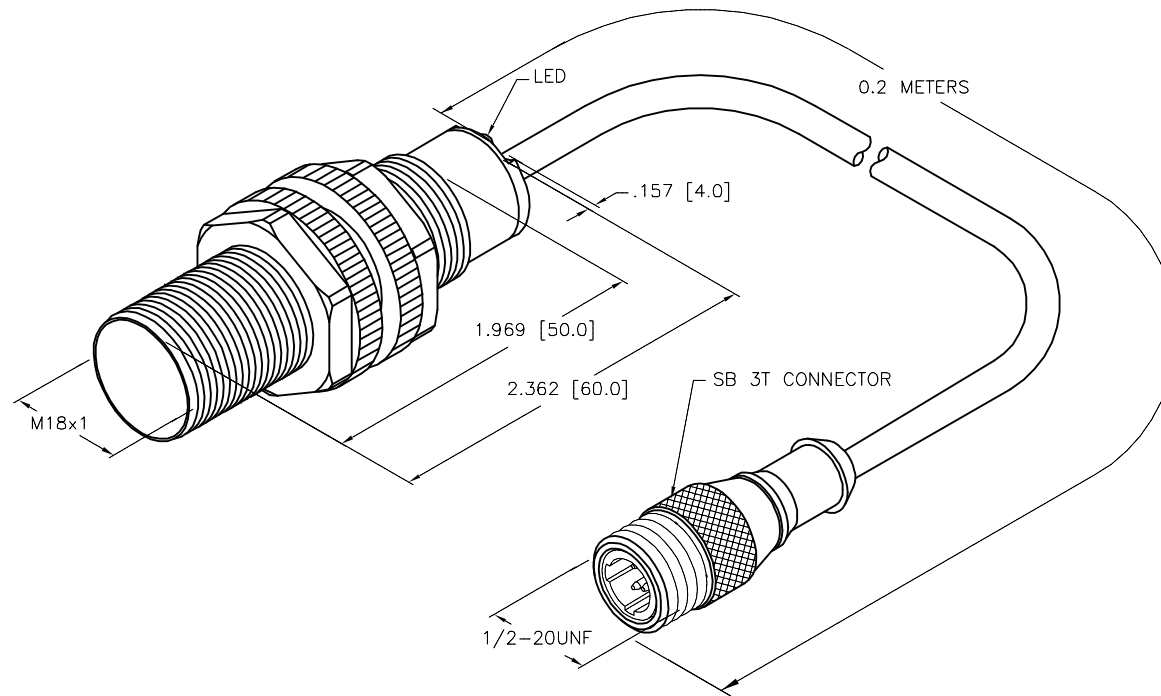
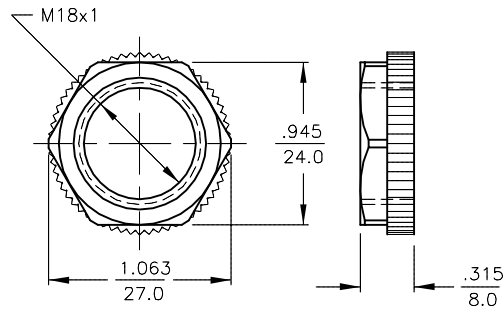


OUTPUT: AZ3X

WARNING: NO SHORT-CIRCUIT PROTECTION
ALWAYS WIRE A LOAD IN SERIES WITH THE SENSOR.

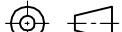
LOCKNUT LN-P18

Technical drawing of a Locknut LN-P18. The drawing includes a top view and a side view. The top view shows a hexagonal nut with a central hole. Dimensions for the top view are: outer diameter 1.063 (27.0), inner diameter .945 (24.0), and thread specification M18x1. The side view shows the profile of the nut, with a height dimension of .315 (8.0).



SPECIFICATIONS	
RATED OPERATING DISTANCE	5mm = .197" (NOMINAL)
MOUNTING MODE	FLUSH
TEMPERATURE DRIFT	≤ ± 10%
HYSTERESIS	3–15%
MIN. REPEAT ACCURACY	≤ 2%
OPERATING TEMPERATURE	–25°C to +70°C (–13°F to +158°F)
RATED OPERATIONAL VOLTAGE	20–250 VAC/10–300 VDC
RATED OPERATIONAL CURRENT	SEE DERATING CURVE
RATED OPERATIONAL CURRENT (AC/DC)	≤ 400 mA/≤ 300 mA
MAINS FREQUENCY	50–60 Hz
RESIDUAL CURRENT	≤ 1.7 mA
RATED INSULATION VOLTAGE	≤ 1.5 kV
SURGE CURRENT	≤ 8.0 A (≤ 10 ms MAX. 5 Hz)
MAX. VOLTAGE DROP	≤ 6.0 V
OUTPUT FUNCTION	NORMALLY OPEN, 2-WIRE
SMALLEST OPERATING CURRENT	≥ 3.0 mA
MAX. SWITCHING FREQUENCY	≤ 0.02 kHz
HOUSING MATERIAL	PLASTIC, PA12–GF30
ACTIVE FACE MATERIAL	PLASTIC, PA12–GF30
END CAP MATERIAL	PLASTIC, EPTR
CABLE	ø5.2, PVC
SHOCK	30 g, 11 ms
VIBRATION	55 Hz, 1 mm AMPLITUDE (IN ALL 3 PLANES)
DEGREE OF PROTECTION	IP67
SWITCHING STATUS INDICATION	LED: RED

SOURCE DRAWING - FOR REFERENCE ONLY

RELATED DOCUMENTS		3RD ANGLE PROJECTION		<div>THIS DRAWING IS CONFIDENTIAL AND THE PROPERTY OF TURCK INC. USE OF THIS DOCUMENT WITHOUT WRITTEN PERMISSION IS PROHIBITED.</div> <div>TURCK</div>		<div>3000 CAMPUS DRIVE MINNEAPOLIS, MN 55441 1-800-544-7769 (763) 553-7300 (763) 553-0708 fax www.turck.us</div>			
1. 2. 3. 4.									
MATERIAL SEE SPECIFICATIONS		ALL DIMENSIONS DISPLAYED ON THIS DRAWING ARE FOR REFERENCE ONLY CONTACT TURCK FOR MORE INFORMATION	DRFT	RDS	DATE	08/26/09		DESCRIPTION B15-S18-AZ3X-0.2-SB3T	
FINISH			APVD		SCALE	1=1.0			
9			UNIT OF MEASUREMENT INCH [MILLIMETER] DO NOT SCALE THIS DRAWING				IDENTIFICATION NO. 4350490		REV D
						FILE: 4350490		SHEET 1 OF 1	